

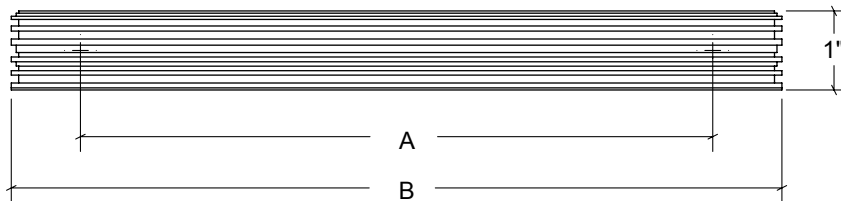
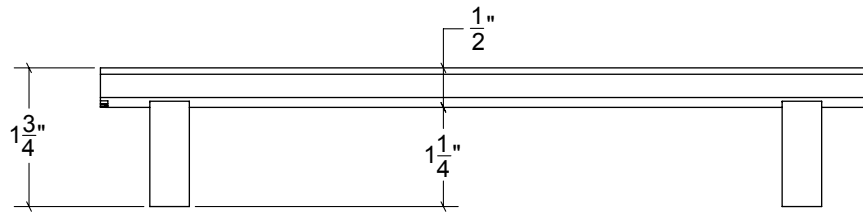
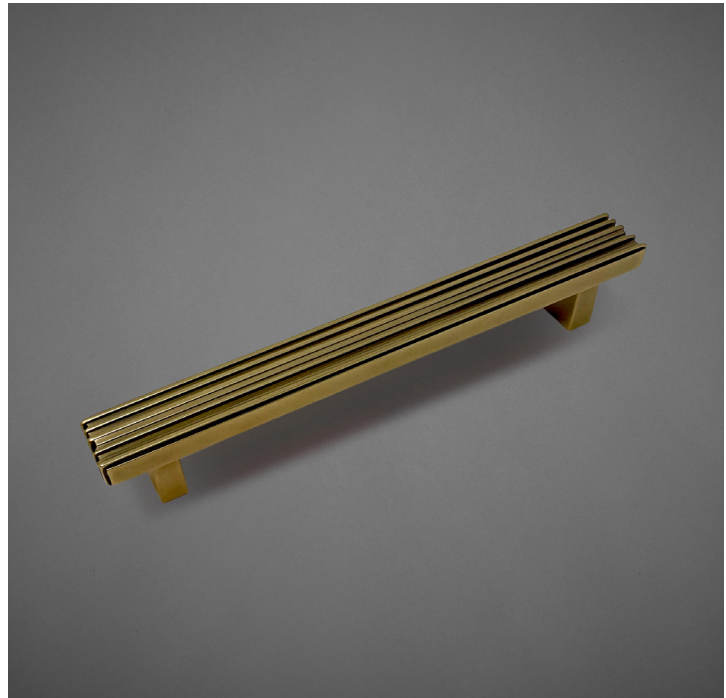
# HAMILTON SINKLER

## DP174 Drawer Pull

Finishes:

- Antique Brass (AB)
- Bright Antique Brass (BAB)
- Brushed Nickel (BN)
- Burnished Antique Brass (BRAB)
- Burnished Brass (BRB)
- Burnished Nickel (BRN)
- Dull Black (DB)
- Oil Rubbed Bronze (ORB)
- Pewter (PW)
- Polished Black Nickel (BLN)
- Polished Brass with Lacquer (PB)
- Polished Chrome (PC)
- Polished Nickel (PN)
- Satin Brass (SB)
- Unlacquer Brass (UB)

Base Material: Solid Brass



|         |   |        |        |        |
|---------|---|--------|--------|--------|
| CC      | A | 4"     | 6"     | 8"     |
| Overall | B | 5-1/2" | 7-1/2" | 9-1/2" |

- Custom lengths and projections are available upon request
- Screw size: #8-32 x 1-1/4" Pan-Head